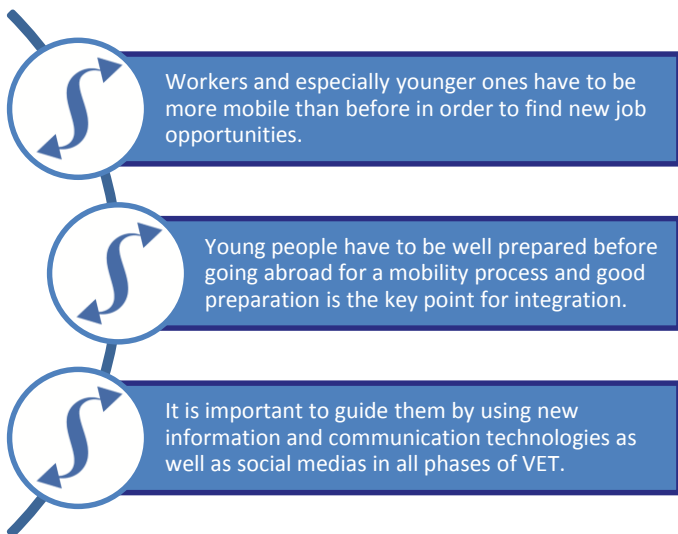




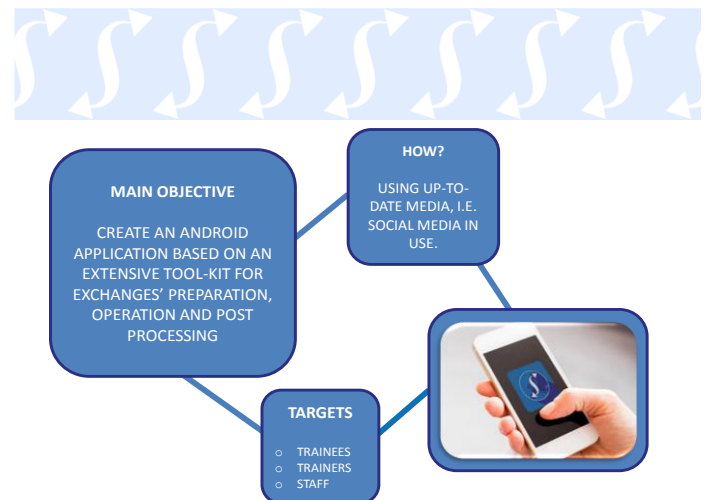
# SOCIAL MEDIA IN EXCHANGES KA2-2014 STRATEGIC PARTNERSHIP PROJECT

## NEWSLETTER 1

### BACKGROUND



### OBJECTIVES



### PARTNERSHIP



**BZB**  
Bildungszentren des  
Baugewerbes e.V.



**FORMEDIL**  
ENTE NAZIONALE PER LA  
FORMAZIONE E L'ADDESTRAMENTO  
PROFESSIONALE NELL'EDILIZIA



# METHODOLOGY – RESULTS – TIME SCHEDULE

- Compilation of information about available ICT tools and social media in country that could be relevant for the APP and survey on ICT and social media uses (trainees, staff, trainers)
- First observation phase during a “classical mobility process” (before, while, after)
- Based on transnational conclusions: first version of the app
- “APP version 1” testing on a real mobility process
- Improvement of “APP version 1”
- Second test of the App on a third observation phase of a mobility process
- READY-TO-USE MOBILE DEVICE SoMEx



## WORK IN PROGRESS



IO1: Information guide containing useful ICT tools and social media uses - VET LEARNERS, TRAINERS AND STAFF IN CONSTRUCTION SECTOR

→ Completed – click here to open the document



IO2: Recommendation on the improvement of the existing mobility process by using an app' to meet trainees / trainers / staff needs

→ Completed – click here to open the document



SoMEx website: [www.somexproject.eu](http://www.somexproject.eu)

→ Visit our Website for more info



IO3: SoMEx mobile device: App

→ In progress